



CREATIVE SXFI AMP

Setup Guide for macOS

For more information, visit creative.com/sxfisupport.



Creative SXFI AMP Setup on macOS

The Creative SXFI AMP is compatible with PCs or laptops running **macOS v 10.13 High Sierra or newer**.

After completing the setup of your Creative SXFI AMP with your profile using an Android device, follow the steps below to ensure the optimal Super X-Fi experience.

Audio Settings Configuration

For the best experience with Super X-Fi, configure your audio settings in accordance with the number of audio channels in your content.

For example:

- If you are playing content with 7.1 channel audio, set 'Audio channel' to '7.1 Surround' in your Speaker Setup Configuration (See Step 4).
- If you are playing stereo content, set 'Audio channel' to 'Stereo' in your Speaker Setup Configuration (See Step 4).

To set the Creative SXFI AMP as your default sound device:

- Go to "System Preferences", "Sound"
- Under "Sound Effects", select "Super X-Fi AMP" as default

Steps to Setting Up the Creative SXFI AMP on macOS

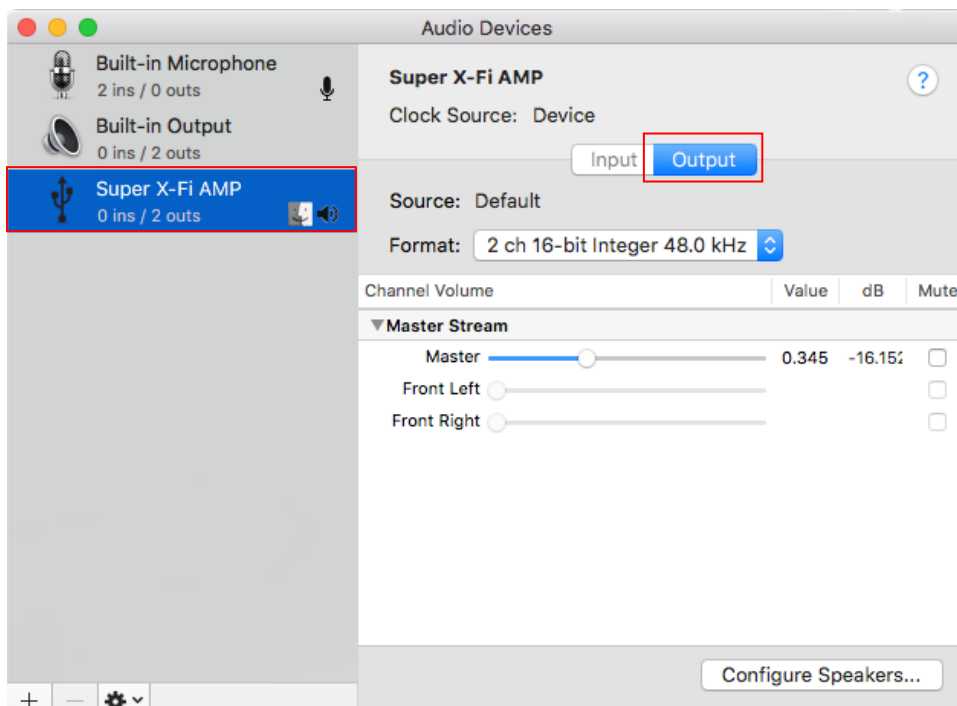
Step 1

- Go to Spotlight and type “Audio MIDI Setup”
- Click to launch the “Audio MIDI Setup” app



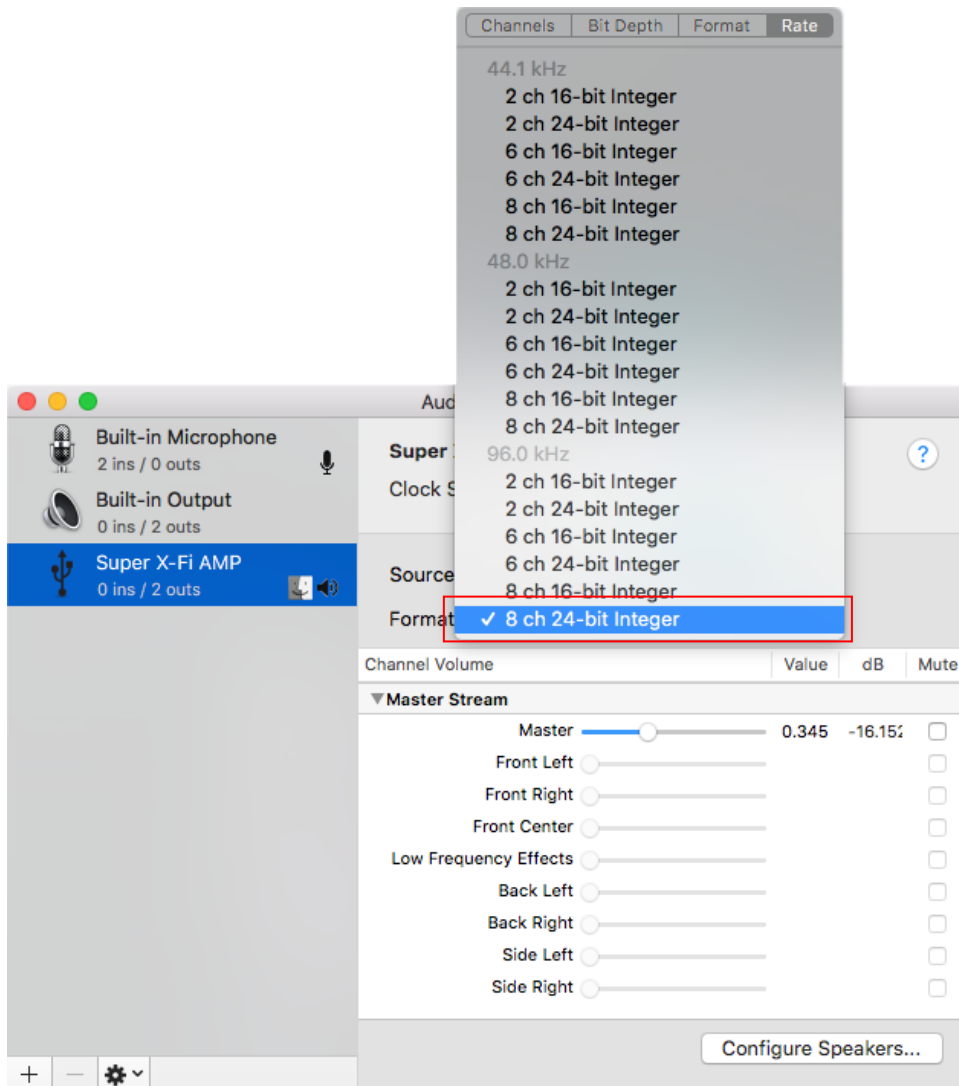
Step 2

- Under “Audio Devices”, select “Super X-Fi AMP”
- Select the ‘Output’ tab



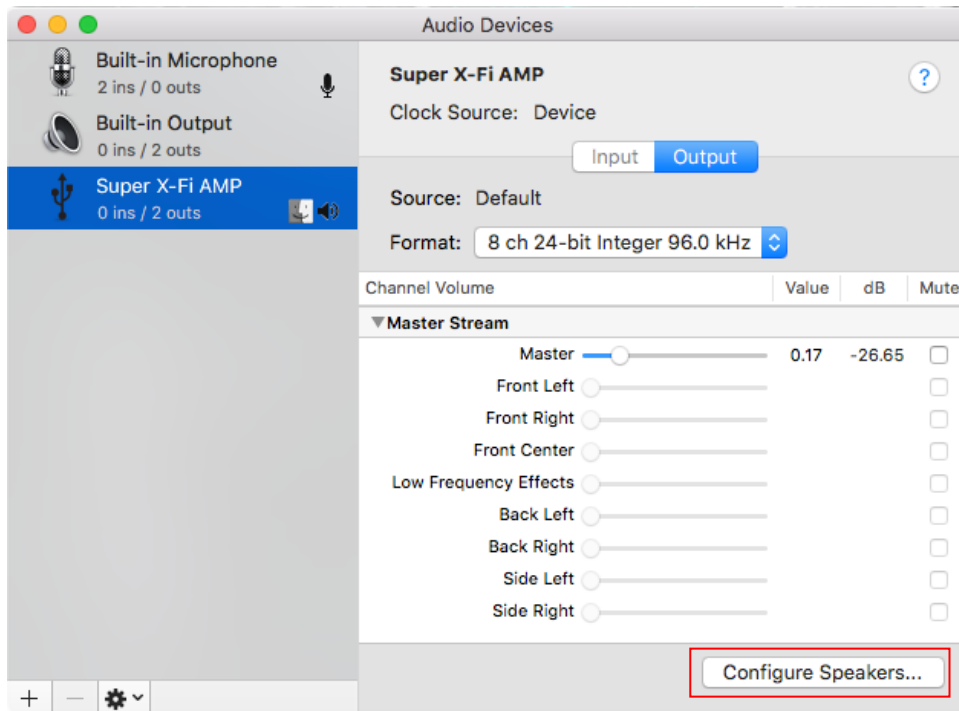
Step 3

- At the Source “Format” dropdown list, select '96.0 kHz, 8 ch 24-bit Integer' (or '48.0 kHz, 8 ch 24-bit Integer')



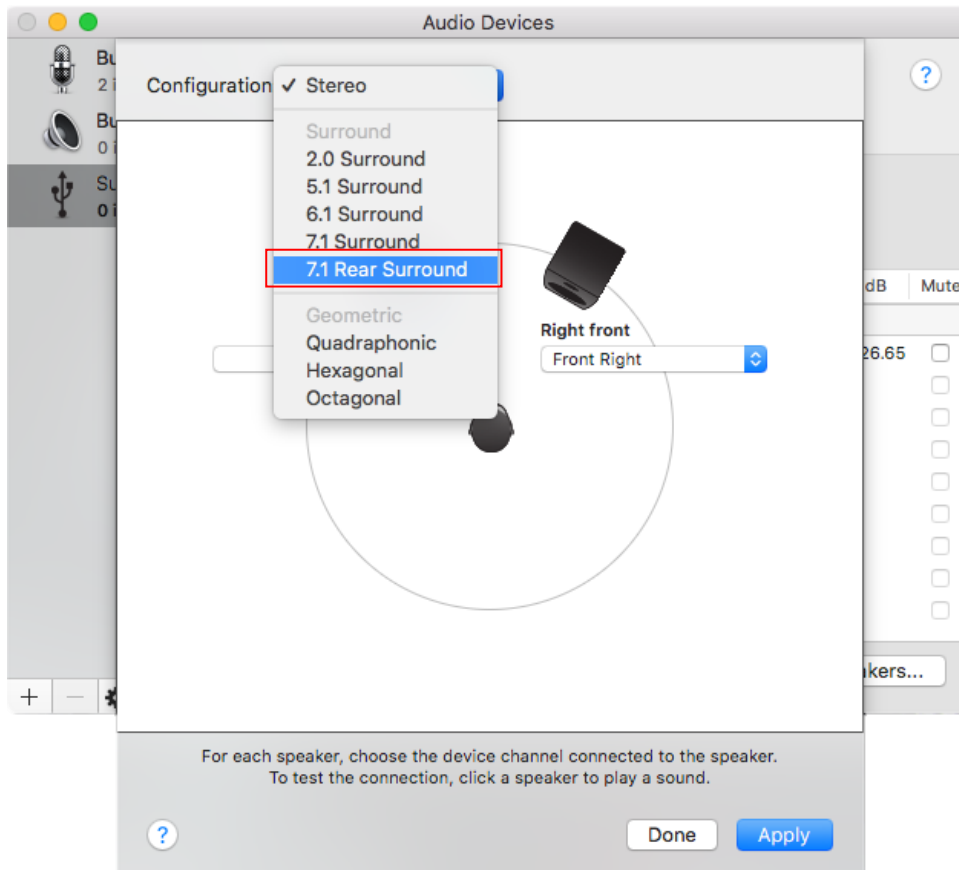
Step 4

- Click on 'Configure Speakers...'



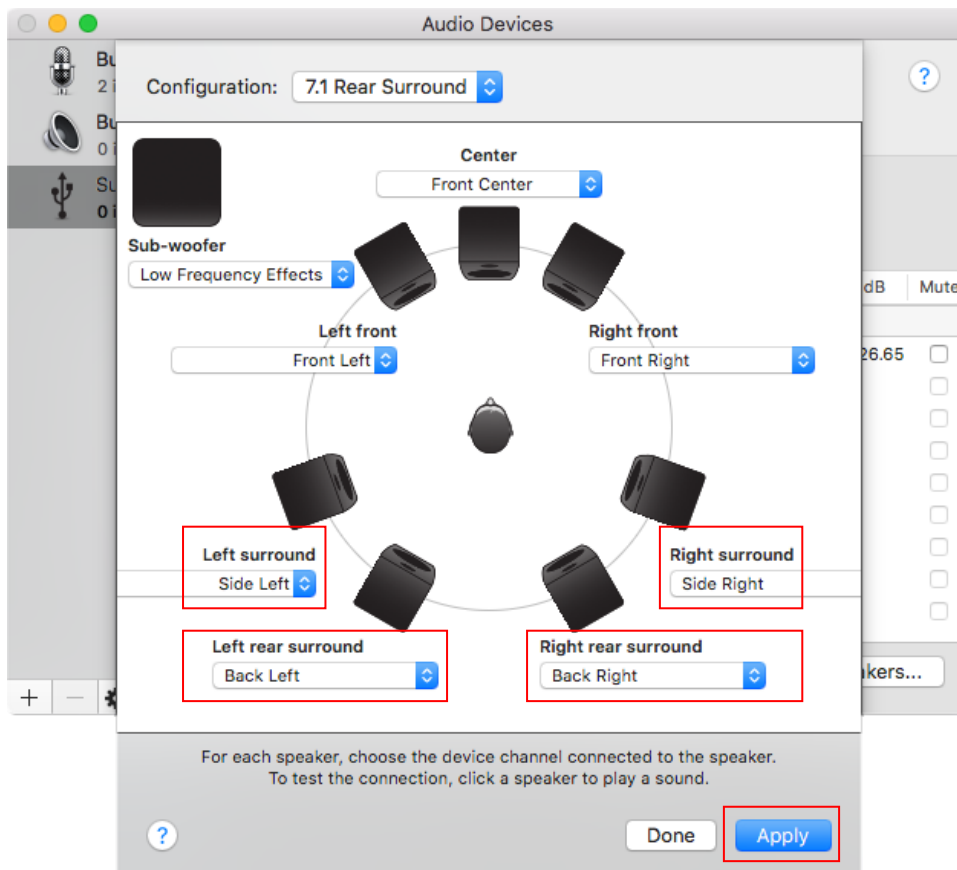
Step 5

- Select '7.1 Rear Surround' from the drop-down menu



Step 6

- A default configuration of speakers will appear
- You will need to reconfigure 4 of the speaker settings via the corresponding drop down lists as follows:
 - For the “Left surround” speaker, set it to “Side Left”
 - For the “Left rear surround” speaker, set it to “Back Left”
 - For the “Right surround” speaker, set it to “Side Right”
 - For the “Right rear surround” speaker, set it to “Back Right”
- Next, click on ‘Apply’ to complete the setup



TIP: To enjoy the optimized Super X-Fi experience, in your application or your game running on Mac, always do the following where possible:

- Set game audio settings to 5.1 or 7.1 Speakers instead of Headphone (even though you are using the Creative SXFI AMP with headphones)
- Disable any headphone surround virtualization

Congratulations, your setup is now complete.